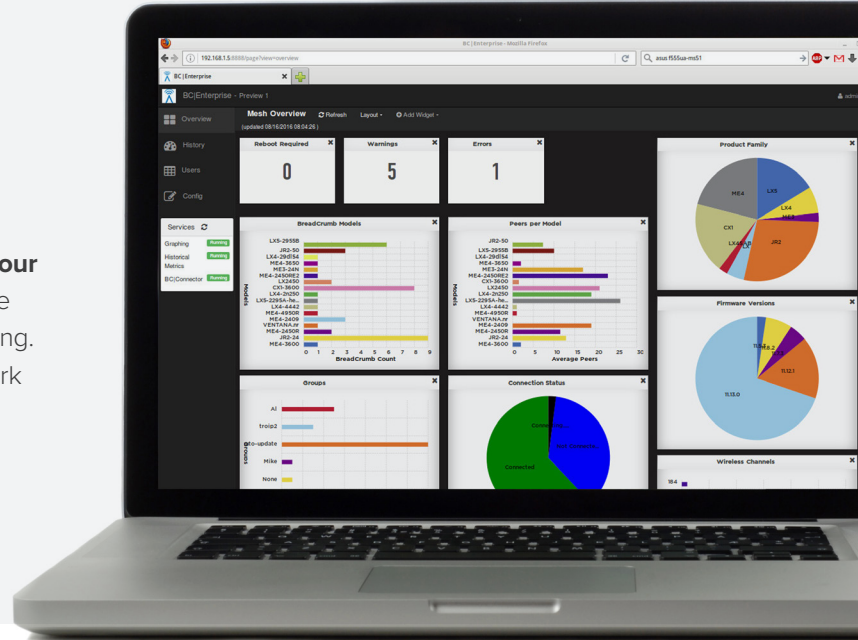


### BC|Enterprise

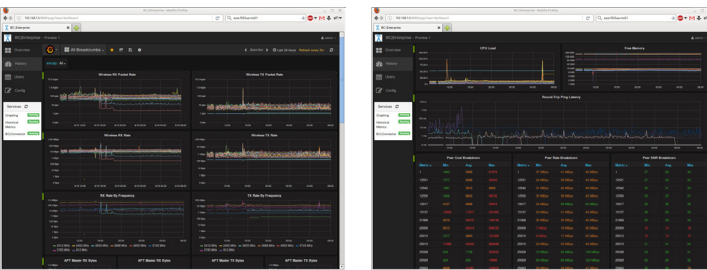
#### Always-On Mesh Network Monitoring for Optimal Performance Management

Together BC|Enterprise and BC|Commander® offer a comprehensive monitoring and management solution for your Kinetic Mesh® network, providing both historical and real-time information for efficient network diagnostics and troubleshooting. BC|Enterprise (BCE) delivers strategic data on historical network performance with live updates to complement the real-time, tactical mesh network views available from BC|Commander.



The system allows you to view network conditions showing what has transpired on your Kinetic Mesh network. To maximize ease of use and provide relevant information to network managers, data is visualized through a number of customizable dashboards. These customizable dashboards allow you to obtain graphs that illustrate virtually any aspect of your mesh network for any chosen time period—now, a few minutes ago, last week, or a few months ago. Having fast access to critical performance, traffic, and configuration data can be a real time-saver to identify and diagnose potential problems before they impact users, while giving you the insights needed to optimize your mesh network for peak performance.

The BC|Enterprise application is installed on its own locally-hosted web server, so an Internet connection is not required and no data ever needs to leave your network. The software provides fast access to strategic data from individual nodes and/or groups of nodes on trucks and shovels, a specific loading dock, or specific set of sensors, for example.



#### BC|Enterprise Features Overview

- Web-accessible application to monitor and manage network performance
- Runs as a background service, low overhead, 'always-on' monitoring and data gathering
- Network functionality spanning user-defined time slices
- SNMP Service to alert based on configurable metrics via SMS or email
- Analysis data for individual nodes or administratively-designated groups of nodes
- Remote or on-site monitoring and management
- Creation of individual user accounts to access monitoring functions
- Weekly and monthly up-time charts in a "Periodic Reports" dashboard
- "Create Dashboard" button on Actions Screen, which allows user to create a custom dashboard by copying a valid dashboard in JSON formation a text area
- Radar Detection charts on the BreadCrumb dashboard for users operating on DFS channels
- "Historical Metrics Support" dashboard to monitor capacity and performance of the historical metrics database
- Secure with SSL/TLS

To easily identify and diagnose potential problems before they impact users, you can configure your BC|Enterprise system to automatically notify you of anomalous conditions within your Kinetic Mesh® network. Because BCE supports several alerting methods, you can choose to receive alerts in the manner you prefer. In addition to email, you can choose to receive alerts via text message by using an email-to-SMS service available from your mobile provider or by using a third-party service such as Twilio®. You can also configure BCE to send alerts via an API to a business chat network such as Slack, Microsoft Yammer®, or Cisco Jabber®. Plus, you can integrate alerting functions with industry-standard SYSLOG servers or other network management tools and schedule reports to be emailed regularly.

While operators of smaller networks may prefer to monitor and manage their mesh networks using BC|Commander® alone, larger enterprise networks will find BC|Enterprise indispensable to reduce troubleshooting man-hours and increase productivity.

