



MOBILE COMPUTERS

Product Group Guide

Mobile Computing: Leveraging the Datalogic Edge

Datalogic remains the premier provider of data capture products and solutions. Over the span of 5 decades, we have served customers all over the world, introducing significant innovations and delivering products of the highest quality, earning the trust of many Fortune 500 companies.

Our fast-expanding range of mobile computing devices is testament to our commitment to empowering our customers with the most secure and widely accessible mobile connected intelligence. Our aim is to help our customers facilitate the seamless collection, processing, and analysis of data on the move.

Collaboration and partnership form the cornerstone of our success. Our extensive 50 years of experience and knowledge, coupled with the expertise of our valued ISV partners, has helped us create and nurture strong ties with many of today's retail world titans. In a world where mobile technology is advancing at an unprecedented pace, Datalogic remains dedicated to pushing boundaries so that we can create innovations, experiences, and solutions that deliver tangible value.

Our Aim

Deliver the most secure and widely accessible mobile connected intelligence, enabling our customers to seamlessly capture, process and analyze data while on the move.



Why Datalogic?

We stand apart as the only European brand in the industry capable of providing a comprehensive mobile solution encompassing hardware, software and services. Our relentless focus on quality, security, innovation and sustainability have garnered the trust of numerous Fortune 500 companies.



Our distinguishing factors



BUILT TO LAST



Datalogic Shield™ is a software service that delivers Android security support for Datalogic mobile computers

SECURITY

Datalogic Mobile Computing: a complete offering

MOBILE COMPUTERS AND ACCESSORIES

Our industrial-grade, purpose-built mobile computers include pocket-sized to full-alpha-keyboard handheld devices, industrial PDAs, pistol-grip terminals, and Vehicle Mount Computers. All feature our premier barcoding scan engine solutions and the most reliable platforms to power your latest applications. Our unique features, such as wireless charging, state-of-the-art scan engines, the latest Android OS, the power of AI, and Ease of Care support are just the icing on the cake.



SOFTWARE

A complete choice of middleware software solutions, tools, and SDK powers our Datalogic Mobility Suite to help customers configure, develop, protect, and optimize our devices. An ecosystem of our own and ever-growing 3rd party innovative solutions.



EASE OF CARE SERVICES

Everything you'd expect from a brand that cares. A comprehensive set of options to deliver the best post-sales support for repairing our devices to keep them running over many years.



OVERNIGHT
REPLACEMENT
COMPREHENSIVE



2-DAY
COMPREHENSIVE



5-DAY
COMPREHENSIVE



PREVENTATIVE
MAINTENANCE



WIRELESS
CHARGING

INNOVATIONS



LEAD IN DESIGN AND MATERIAL

Product Portfolio

MOBILE COMPUTERS - PDA

MEMOR 30/35 FAMILY

Memor 30-30X



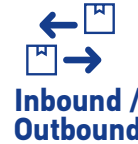
Memor 35-35X



Memor 30-30X and Memor 35-35X: Enterprise grade mobile computers with ultimate performance in a fully rugged design with future proof technology features. Ultra reliable battery management and enhanced scanning performance in an optimal form factor for key use cases in retail, transportation & logistics and manufacturing.

Highlights

- 2 brand new Datalogic scan engines with a range up to 10mt for Memor 30X-35X models
- Streamlined future-proof computing & connectivity: Qualcomm 2.4 GHZ Octa core platform, 5G and WIFI 6E
- Green spot technology
- Easy of use & versatile solution:
- 6" display, 12h swappable battery
- Proven reliability & TCO: IP68 dust and water protection
- Multi-Side NFC payment
- Wireless charging
- Long lasting Android support
- Front/rear camera
- Plastic free, recycled packaging



MEMOR 12/17 FAMILY

Memor 12



Memor 17-17 Healthcare



Memor 12-17 is our newest full-touch Android device powered by the latest technology available. Designed specifically to be carried all day long by front-line workers thanks to its thin and lightweight form factor, Memor 12-17 also provides top indoor and outdoor connectivity with its Wifi6E and 5G. Always powered by Datalogic Mobility Suite and protected with our Ease of Care program, Memor 12-17 ensures peace of mind for every front-line workers in retail, transportation and logics and healthcare.

Highlights

- Higher efficiency by scanning any kind of barcodes at variable conditions with advanced DeepSight™ decoding technology
- Rely on your device - built with Corning™ Gorilla™ Glass 7 to withstand drops and scratches
- Experience the best outdoor connectivity with 5G, and create your own network with Private 5G
- Flexible performance with Swap Memory to run applications faster in peak working tasks
- Ultimate flexibility with three different charging options: USB-C, Wired cradles, Wireless cradles
- Fullfill Healthcare front facing applications with a dedicated device + Healthcare accessories.



In-Store operations



Assisted sales



Price Checking



Access control



Inbound Logistics and Storage



Light inventory management



Baggage Reconciliation



Last mile delivery



Shipping/Receiving



Bedside care



Pharmacy



Labs



Product Portfolio

MOBILE COMPUTERS - PDA



MEMOR 11

The Memor 11 mobile computer comes with enhanced processing capabilities, an up-to-date operating system, and superior scanning performance. Built for a versatile mobile workforce to meet the needs of the most common retail, warehouse, manufacturing, and transportation & logistics applications.

Highlights

- Ultra-Ergonomic, compact and robust
- 5 inch brilliant capacitive multi-touch HD display
- Validated by Google as 'Android Enterprise Recommended' for rugged devices
- Wireless charging increases reliability dramatically by eliminating contacts on both the device and docks
- Ruggedized with drop resistance to 1.5 m / 5 ft to concrete and IP65 sealing
- Full suite of cellular connectivity for voice and data, featuring LTE-Advanced/4G+



Assisted sales



Inventory management



Access control



Shipping/Receiving



Inbound Logistics and Storage



Baggage Reconciliation



MEMOR 11 HEALTHCARE

Memor 11 HC is designed to provide a versatile solution for today's clinical and non-clinical healthcare workforce. With an up-to-date operating system and enhanced processing capabilities, this device delivers superior scanning performance and all-around efficiency with Wi-Fi and Cellular capabilities, keeping healthcare staff permanently connected inside and outside patient care facilities.

Highlights

- Chemical resistant enclosure to withstand daily cleaning with disinfectant solutions
- Market-proven design, compact and robust
- Superior processing capabilities + 4GB of RAM
- 5-inch capacitive multi-touch HD display
- Android 11 with Google Mobile Services
- Ultra-slim 2D imager enhanced for dark environment performance plus Datalogic's exclusive 'Green Spot' technology for visual good-read feedback
- Ultra-reliable swappable battery
- Contactless wireless charging



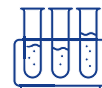
Bedside care



Pharmacy



Inventory management



Labs



COMPLEMENTARY PRODUCTS

Highlights

- Provides a larger, fixed high gain antenna for up to 9 m / 29.5 ft of read range
- In-reader Tag de-duplication software
- The integrated ePop-Loq® socket allows for data and charge connections
- Flat landing contact pads, allowing for quicker docking and greater durability
- Bluetooth Version 4.2 technology
- Supports both Bluetooth Classic as well as Bluetooth Low Energy (BLE) connectivity
- Can be operated in Serial Port Profile (SPP) or Human Interface Device mode (HID)
- LED indicators on the rear side of the antenna
- Direct USB Connection for Ultra secure data gathering
- Equipped with a Micro SD socket and real-time clock



RFID SLED

RFID SLED is a handheld device to convert the Memor 11 PDA to a UHF RFID reader.

Designed to provide the best-in-class performance for rapidly reading large numbers of UHF RFID tags, the 2128P reader boasts improved levels of accuracy and RFID read/write performance.

All items within range are read simultaneously.



Price Checking



In-store and Back Room Inventory



Item Tracking and Location



Material & Finished Goods Inventory



Surgical instruments, and blood bag tracking

SELF-SHOPPING

Highlights

- Powerful Octa-Core Qualcomm platform SDA660 with 4GB RAM and 32GB FLASH
- Android™ operating system running Google Mobile Services (GMS)
- Unique wireless charging technology in the self-shopping market
- Green spot good read on item label provides and intuitive feedback to the user easing and speeding up scanning operations
- Available in standard or personalized colors and in two form factors: pistol grip and handheld



Shopevolution 8™

JOYA TOUCH 22

The Joya™ Touch 22 is the ultimate self-shopping companion. It has enhanced self-scanning capabilities allowing consumers to scan and pack items faster, leading to queue busting at the checkout while offering a comfortable and unique shopping experience.

Shopevolution 8 is Datalogic's most advanced self-shopping software designed to improve the future of shopping experience and reduce losses with AI. Shopevolution is designed and optimized to work seamlessly with its Joya™ devices.



Self-shopping



Queue-busting



In-store operations



Product Portfolio

MOBILE COMPUTERS - PDT



SKORPIO X5

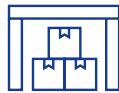
The Skorpio™ X5 mobile computer is rugged enough to face the toughest Enterprise challenges. Featuring Google OS Android™ 10 with GMS and upgradable to Android 13, the Skorpio X5 is designed for the harshest environments and has a wireless charging option.

Highlights

- Largest 4.3" high visibility display in its class
- Validated by Google as 'Android Enterprise Recommended' for rugged devices
- High performance octa-core 2.2 GHz Qualcomm processor up to 4 GB RAM
- Handheld and Pistol-grip form with 3 keyboard layouts
- Fully rugged 1.8 m drop and IP65 rating
- Choice between Wireless Charging or Wired versions with dedicated docks
- Scan engine: 1D Imager, 2D Imager Standard Range, Mid-Range and near/far Extra-Long-Range Imager



**Store Inventory,
Store Replenishment**



**Receiving, Putaway,
Replenishment**



**Picking /
Order Fulfillment**



**Forklift
operations**



**Returns
Management**

WEARABLE SCANNERS



CODISCAN

CODiScan is a Bluetooth wearable scanner series to address Logistics and Manufacturing applications as well as Retail and Healthcare warehousing operations.

Available with two optics: Standard Range - ideal for scanning activities at intuitive distances, and Mid-Range - adding the capability to decode with an increased depth of field up to 1.5 m / 4.9 ft.

Highlights

- Higher ergonomics and flexibility: minimal footprint, only 44 grams in weight, multiple mounting options (hand, neck/belt/pocket)
- Higher scanning performance and productivity: 1D/2D reading capabilities up to 1.5 m / 4.9 ft, intelligent aiming system, good-read confirmation on label, lateral and rear high-visible LEDs, audio and haptic feedback, 2 working shift operations
- Easier to use and manage: mobile app for pairing and settings, hand-rigger modularity for easy washing and disposal, expandable 2-slot charger



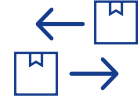
Packing



Picking



Order fulfillment



Inbound/Outbound



VEHICLE MOUNT COMPUTERS

Highlights

- Anti-glare multi-touch screen, with gloves support
- WLAN: IEEE 802.11 a/b/g/n, CCX v4
- Bluetooth® Wireless Technology v4.0
- Wired Ethernet (GbE) included
- Sealed to IP65/IP67 protection class
- Wide operating temperature range from -20 to 55 °C / -4 to 131 °F (Freezer 10 inch model to -30 °C / -22 °F)
- Tethered and cordless bar code scanner support
- External ABCD, QWERTY and software keyboard options

RHINO II

The Rhino II™ vehicle mount computers, available in both 10" and 12" display sizes, sets the standard for ruggedness in the warehouse. Rhino II offers a choice of WES 7, Windows 10 IoT Enterprise or Android 7.1 operating systems.



Warehouse management



Forklift operations



Cold storage and harsh outdoor



Manufacturing Shop Floor applications

Highlights

- Multi-Touch operations on the anti-glare glass panel even when wearing gloves
- Particularly resistant against mechanical impacts like shock and vibration
- Protection against dust and moisture (IP65/IP67)
- Low temperature usage from -20 to 55 °C / -4 to 131 °F
- Display with LED-Backlight:
 - SH15: XGA 1024 x 768 400 cd/m²
 - SH21: WUXGA 1920 x 1080 300 cd/m²
- Intel® Quad Core 4 x 1.91 GHz with 4 GB RAM
- Intel® Core i5 with 16 GB RAM
- Windows® Embedded Standard 7 Windows 10 IoT
- Motion sensor to trigger screen blanking (SH15 Blackline option)

BLACKLINE SH15/SH21

The SH15 Blackline computer is a 15-inch rugged vehicle mount computer (VMC), also available as a fixed mount unit. The SH21 Blackline computer is a 21-inch industrial computer. Both are ideal for industrial applications.



Warehouse management



Forklift operations



Cold storage and harsh outdoor



Manufacturing Shop Floor applications



MOBILE COMPUTERS

	PDA MID-TIER	PDA ENTRY-LEVEL	PDA ENTRY-LEVEL
	MEMOR™ 30/35 FAMILY	MEMOR™ 12/17 FAMILY	MEMOR™ 11
			

APPLICATIONS

<i>Retail</i>	X	X	X
<i>Manufacturing</i>	X	X	X
<i>Transportation & Logistics</i>	X	X	X
<i>Healthcare</i>	-	X	X

FEATURES

<i>Operating System</i>	Android v13 GMS	Android 13, upgradeable to Android 18	Google Android 11 with Google Mobile Services (upgradeable to Android 13)
<i>CPU, Processor</i>	Qualcomm QcX4490 Octa-core 2.4 GHz	Qualcomm QcX4490 Octa-core 2.4 GHz	2 GHz Octa-core
<i>Memory: RAM / ROM</i>	System RAM: 6 GB; eMMC Flash: 128 GB	RAM Model 6GB: 6 GB on-chip RAM, plus an optional 2 GB SWAP Memory (using flash storage as extra RAM, activated through a setting). UFS Flash Storage: 64 GB (both models)	System RAM: 4 GB; eMMC Flash: 32 GB
<i>Display</i>	6.0 inch LTPS in 18:9 format - FHD resolution 1080 x 2160; LED backlight; 500 NITS typical	6.0 inch LTPS in 18:9 format - FHD+ resolution 1080x2160; LED backlight; 450 NITS	5 inch IPS HD resolution 720 x 1280; LED backlight; Touch Screen: 5 points multi-touch capacitive panel with Dragontrail hardened glass
<i>1D/Linear Codes/2D Codes/2D Imager</i>	X	X	X
<i>Wireless Charging</i>	X	WPC Qi EPP compliant; 7W charging	X

COMMUNICATIONS

<i>Local Wireless Radio (Wi-Fi, Bluetooth®)</i>	Bluetooth® wireless technology V5.3 (Classic Bluetooth wireless technology and BLE)	Bluetooth wireless technology v5.3 (Classic Bluetooth wireless technology and BLE)	Bluetooth® V5.0, Low Energy (BLE) Support
<i>Wireless Wide Area Network (WWAN)</i>	Memor 35/35X only LTE-Advanced / 4G+; NR 5G FR1; 3GPP Rel.16;	LTE-Advanced / 4G+; NR 5G FR1; 3GPP Rel.16;	LTE-Advanced/4G+; Cat 6
<i>Wired Communications</i>	High Speed USB 3.2 gen1 Host and Client (Type-C); Super Speed USB 2.0 (Type-C, Bottom I/O)	High Speed USB 3.2 gen1 Host and Client (Type-C); Super Speed USB 2.0 (Type-C, Bottom I/O)	USB-C: High Speed USB 2.0 Host and Client






OPTIONS

<i>Keypad / Keyboard Options</i>	Physical Keys: 2 side scan keys; PTT; Power On/Off; Volume Up/ Down; 3 Android soft keys	Physical Keys: 2 side scan keys; PTT; Power On/Off; Volume Up/ Down; 3 Android soft keys	Two (2) side scan keys; Power On/Off; Volume Up/Down; Three (3) user programmable Android™ keys
<i>Camera</i>	Rear Camera: Resolution: 13 megapixel; Auto focus Illumination: User controllable LED flash (torch mode); Front Camera: Resolution: 8 megapixel; Fixed focus	Rear Camera: Resolution: 13 megapixel; Auto focus Illumination: User controllable LED flash (torch mode); Front Camera: Resolution: 8 megapixel; Fixed focus	Resolution: 13 megapixel; Illumination: User controllable LED flash; Lens: Auto focus
<i>Voice Capability</i>	VoIP		-

RUGGEDNESS / DURABILITY

<i>IP Rating</i>	IP65 and IP68 with battery, per IEC60529 specification	IP65 and IP67	IP65
<i>Drop to Concrete</i>	1.2 m / 4.0 ft (without rubber boot) 1.8 m / 6.0 ft (with rubber boot)	Multiple 1.5/6ft drops to concrete over operating temperature (with rubber boot) 1m/3.2 ft tumbles at room temperature (with rubber boot)	1.5m / 5ft
<i>Operating Temperature</i>	Operating: -20 to 50 °C / -4 to 122 °F Storage/Transport: -30 to 70 °C / -22 to 158 °F	Operating: -10 to 50 °C / 14 to 122 °F Storage/Transport: -40 to 70 °C / -40 to 158 °F	-20 to 50 °C / -4 to 122 °F
<i>Weight</i>	With Battery: 312 g / 10.9 oz	With Battery: 245 g/8.6 oz	285.0 g / 10.0 oz

*not all Skorpio X5 features are available on all device versions

SELF-SHOPPING	PDT	WEARABLE SCANNERS	VEHICLE MOUNT COMPUTERS	
JOYA™ TOUCH 22	SKORPIO X5	CODISCAN	RHINO II	BLACKLINE SH15/SH21
				
X X X -	X X X X	X X X X	X X X X	- X X -
Android 11	Google Android 10 with Google Mobile Services (GMS) and Android Enterprise Recommended (AER)	Can be paired to any Android™ mobile computer through the Aladdin App	Windows Embedded Standard 7, Windows 10 IoT Enterprise 64 bit, Android 7.1	Windows Embedded Standard 7 or Windows 10 IoT Enterprise 64 bit
Qualcomm® SDA660 System-on-Chip 2.2 GHz	Qualcomm SD660 Octa-core 2.2 GHz		Proc. ARM 4 x 1.0 GHz; Proc. Intel E3826 2 x 1.46 GHz	Intel Atom E3845 Quad Core 1.91 GHz; Intel i5-5350U Dual Core 1.8 GHz
System RAM: 4 GB; System Flash: 32 GB	RAM: 3 / 4 GB; Flash: 32 / 64 GB	-	RAM: 1/2 Gb (Arm), 4 GB (Intel) Storage: 32 GB CFAST/SD Card	RAM: 4 GB (Quad Core); 16 GB (i5) Storage: 32 GB CFAST/SD Card
4.3 inch full touch TFT-LCD color display; FWVGA: 854 x 480 pixels; 16M colors, LED backlight	4.3 inch TFT / Transflective LCD with 800 x 480 WVGA pixel resolution; LED backlight and integrated touch screen	-	Freezer Model: 10.4 inch SVGA 800 x 600, 400 NITS; Standard Model: 10.4 inch XGA 1024 x 768, 350 NITS 12.1 inch XGA, 1024 x 768, 500 NITS	SH15 XGA 1024 x 768, 400 NITS SH21 FHD 1920 x 1080, 350 NITS
X	X Including new 2D Mid Range and new near-far Extra Long Range (XLR)	X	-	-
X	X	-	-	-
IEEE 802.11 a/b/g/n/ac and 802.11 d/e/h/i/k/r/v/w/mc (for indoor localization); IPv4, IPv6 Bluetooth® v5.1 with BR/EDR and BLE	IEEE 802.11 a/b/g/n/ac and 802.11 d/e/h/i/k/r/v/w/mc IPv4, IPv6, 2x2 MU-MIMO for higher throughput and coverage Class 2, Bluetooth V5.0, NFC	BT BLE/CLASSIC 5.2 class 1,2,3 Supports Bluetooth Low Energy 4.0, 4.1, 4.2, 5.0, 5.1, 5.2	Wi-Fi 802.11 a/b/g/n (2.4 & 5 GHz); Cisco CCX v4; Bluetooth® v4.0	Wi-Fi 802.11 a/b/g/n (2.4 & 5 GHz); Cisco CCX v4; Bluetooth® v4.0
-		-	Optional	-
USB-C: High Speed USB 2.0	USB Type-C: USB 3.1 gen 1 Gigabit Ethernet connectivity (on 3 Slot docks dedicated to contact charging devices)	Datalogic Gateway or PowerScan 9600 cradle - manages up to 7 CODiScan	Ethernet; USB; RS-232 (5 and 12 V)	Ethernet; USB; RS-232 (5 and 12 V)
Fully programmable key	47-key full alphanumeric, 38-key functional; 28-key numeric keyboard	-	4 programmable keys; Customizable Software Keyboards	4 programmable keys; Customizable Software Keyboards
Black & White image capture via scanner	Rear Camera 13 MP	-	-	-
VoIP	VoIP	-	-	-
-	IP65	IP54 - EN 60529	IP65 / IP67	IP65 / IP67
1.2 m / 4.0 ft	1.8 m / 6.0 ft	1.8 m / 5.9 ft	-	-
-10 to 50 °C / 14 to 122 °F	-20 to 50 °C / -4 to 122 °F	-20 to 50 °C / -4 to 122 °F	Standard Model: -20 to 50 °C / -4 to 122 °F Freezer Model: -30 to 50 °C / -22 to 122 °F	-20 to 55 °C / -4 to 131 °F
Handheld: 285 g / 10.1 oz; Pistol-Grip: 317 g / 11.2 oz	Handheld (w/stan. battery): 488 g / 17.2 oz Pistol grip (w/stan. battery): 600 g / 21.1 oz XLR with pistol grip and high capacity battery: 665 g	44 g / 1.5 oz	10 in. Freezer Model: 3.4 Kg / 7.5 lb 10 in. Standard Model: 3.6 Kg / 7.9 lb 12 in. Standard Model: 4.7 Kg / 10.4 lb	SH15: 6.5 Kg / 14.3 lbs SH21: 10.8 Kg / 23.8 lbs

Accessories



Memor 30/35 accessories

Base Stations/Chargers



- 94ACC0372
Multi Battery Charger



- 94A150117 4SD WIRED - 4-Slot Dock Std
- 94A150119 4SD WIRED - 4-Slot Dock Ethernet
- 94A150118 4SD WLC - 4-Slot Dock Wireless



- 94A150112 SSD WIRED - Single Slot Dock Std
- 94A150114 SSD WIRED Single Slot Dock - USB/Ethernet
- 94A150113 SSD WLC - Single Slot Dock Wireless



- 94A150115
Vehicle Charger



- 94A150116
Desktop docking station

Miscellaneous



- 94ACC0373
Handle trigger



- 94ACC0374
Protective Boot



- 94ACC0378
Forearm holder



- 94ACC0377
Belt holder



- 94ACC0375
Handstrap



Memor 12-17 accessories

Base Stations/Chargers



- Charging Dock
94A150128 wired
94A150129 wireless



- 4-Slot Charging Dock
94A150130 wired
94A150131 wireless



- 94ACC0392
Multi Battery Charger



- 94A150125
Vehicle Charger

Miscellaneous



- 94ACC0377
Belt Holster



- 94ACC0408
Hand Strap



- 94ACC0406
Trigger Handle



- 94ACC0393
Wearable Holder



Memor 17 HC accessories

Miscellaneous



- 94A150126



- 94ACC0414



- 94ACC0405



- 94ACC0409

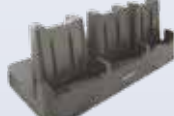


Memor 11 accessories

Base Stations/Chargers



- 94A150095
Single Slot Dock



- 94A150096
3-Slot Dock



- 94ACC0192
Battery Charger



- Ethernet Adaptors (Single:
94ACC0297 / Triple: 94ACC0288)

Miscellaneous



- 94A150097
Vehicle Dock



- 94ACC0201
Pistol Grip



- 94ACC0193
Rubber Boot



- DLR-SLED01-EU
RFID Reader Sled



Memor 11 HC accessories

Miscellaneous



- 94A150098 Single Slot
Charging Dock



- 94ACC0387
Cleanable Battery Pack



- 94ACC0204
Rubber Boot

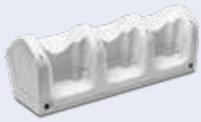


- 94ACC0203
Cleanable Hand Strap

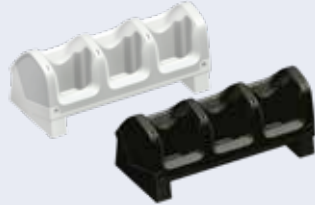


Joya Touch 22 accessories

Cradles and Holders



• 91ACC0043
3-Slot Cradle-Wall Mount



• 91ACC0069 3-Slot
Cradle-General Purpose



• 91ACC0072 Single
Slot Cradle Locking



• 91ACC0073 Single Slot
Cradle Charge only

Miscellaneous



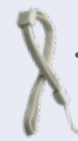
• 91ACC0047
Trolley Holder
(60 pcs)



• 91ACC0079
Rubber Boot



• 91ACC0080
Holster



• 91ACC0036
Lanyard



Skorpio X5 accessories

Base Stations/Chargers

- 94A150106 Single Slot Dock, Wireless
- 94A150107 Single Slot Dock, Wired
- 94A150108 3 Slot Dock Wireless Light
- 94A150109 3 Slot Dock Wireless Charging Locking
- 94A150110 3 Slot Dock Wired
- 94ACC0274 Multi Battery Charger



Miscellaneous

- 94ACC0324 Screen Protector
- 94ACC0325 Attachable Pistol Grip
- 94ACC0323 Rubber Boot for HH and Gun
- 94ACC0330 Skorpio X5 XLR Belt Holster
- 94ACC0331 Skorpio X5 XLR Rubber Boot
- 94ACC0050 Belt Holster, Skorpio



CODiScan accessories

Base Stations/Chargers



- SC-HS7600
- Chargers, 1X, 1 Slot

MODULE FEATURES



- MC-HS7600
Chargers, 2X, 2 slots up to 6 slots:
1-piece modular 2 slot-charger – up to 6 slots using same power supply

MODULARITY SYSTEM

- MC-12HS7600
Chargers, 12X, 1 piece charger - 12 slots

Miscellaneous



- HT1-HS7600KR
Right Hand Trigger -
Adjustable Multisize - 1 pc



- LH-HS7600
Lanyard - Extensible with
Holder for Neck/Belt



- GWU-HS7600
Gateway Connect USB -
Bluetooth-Wi-fi



Spares available for electronics, fabric and straps



INVENTORY MANAGEMENT & SHELF REPLENISHMENT

With Memor 12

Increase your efficiency with no efforts - have a firm yet lightweight grip with Memor 12, while experiencing accurate and fast feedback in scanning any type of barcodes, even GS1 Digital-link.



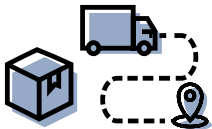
Shopevolution 8™

SELF SHOPPING

with Joya Touch 22 and Shopevolution 8

The enhanced self-scanning capabilities allow consumers to scan and pack items faster, leading to queue busting at the checkout, while offering a comfortable and unique shopping experience.

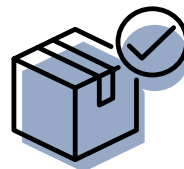
DATALOGIC MOBILE SOLUTIONS



LOGISTICS AND DELIVERY OPERATIONS

with Memor 30/35 family

M30/35 streamlines processes thanks to inbuilt future proof technology: top data capture performance (short and long range scan engines, front/rear camera and green spot feedback on the label), 5G, Wi-Fi6E, Bluetooth 5.3. It is the perfect tool for enhancing accuracy and productivity in retail store operations, last mile delivery and warehousing.



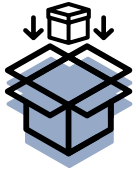
WAREHOUSE MANAGEMENT

with Skorpio X5

The Skorpio X5 is a fully rugged PDT that works in the harshest environments. The Extra-Long Range (XLR) model is strengthened by additional bumpers and a rubber boot to ensure maximum robustness.

The Extra-Long Range imager is perfect for all applications where the same device must read codes at different distances, up to 20 m.





PICKING & PACKING *with CODiScan*

CODiScan stands as the ultimate wearable scanner tailored for the Transportation & Logistics, Retail, and Manufacturing industries. CODiScan facilitates hands-free work, enhancing accuracy, productivity and better comfort.



IN-STORE AND BACK ROOM INVENTORY *with RFID Sled & Memor 11*

The ideal solution to help complete inventory tasks in seconds, whilst reading tags simultaneously. Memor 11, together with RFID sled, ensures high performance on real-time inventory visibility, easy item tracking and excellent reading accuracy.

**YOU DON'T HAVE TO RESTRICT YOUR POWER OF CHOICE.
WE HAVE ALL NEEDED TECHNOLOGIES.
THE BEST SOLUTIONS IS THE ONE TAILORED TO YOUR NEEDS.**



FORKLIFT OPERATIONS *with Rhino II and Blackline SH15/SH21*

Vehicle mount computers are extremely rugged and designed for forklifts, industrial vehicle, and other extreme usage in hazardous zones. Offered in a range of sizes from a compact 10" version for narrow spaces to a huge 21" display industrial computer.



BEDSIDE CARE *with Memor 17 Healthcare*

Dedicated device and accessories to maximize operational efficiency. Hold your device with our HC belt clip, while experience fast connectivity indoor for front-line applications such as bedside care, and outdoor with 5G capabilities for home healthcare.



Software & tools



Datalogic Mobility Suite

The Datalogic Mobility Suite is a comprehensive software ecosystem developed to enhance the Android™ experience and simplify the busy lives of mobile computer users. It includes a set of management, deployment, productivity and development Software and APIs to add value and improve the ROI of customers deciding to invest in mobile computers. Leveraging these Datalogic tools allows companies from all industrial sectors to make their end users' everyday work easier than ever.

PROTECT



Datalogic Launcher

A kiosk solution that limits the device to dedicated applications



Datalogic Enterprise Browser

A locked down Enterprise Browser able to grant secure and dedicated web browsing information



Datalogic Shield

Periodic Software Updates, including the upgrade of Google Security Patches



Datalogic Integrity Kit

A set of functionalities offering a high level of protection from HW Tampering

CONFIGURE



Datalogic AEQR Code Enrollment

An optimized web application to facilitate the Enrollment of Device Management solutions



Scan2Deploy

The Datalogic Staging tool to create a complete set of configurations



OEM Config

Enables to set device configurations with OEM Config compliant EMM

DEVELOP



Datalogic SDKs

SDKs to develop applications on Datalogic Mobile Devices. Available in Java/Kotlin, Xamarin MAUI, JavaScript and others



Visual Formatter

A block diagram configuration solution integrated in Scan2Deploy to set bar code formatting rules and many other device behaviors



Wedge

Get the barcode injected as keyboard and other inputs in your applications without any integration effort

OPTIMIZE



Battery Manager

Collect battery usage data and select the best battery profile based on your ROI goals



Datalogic Logger

Collect advanced logs from the device to better understand running applications



WiFi Guard

Continuously collect advanced Diagnostics of Wi-Fi data like RSSI and throughput to check for anomalies in your Wi-Fi network



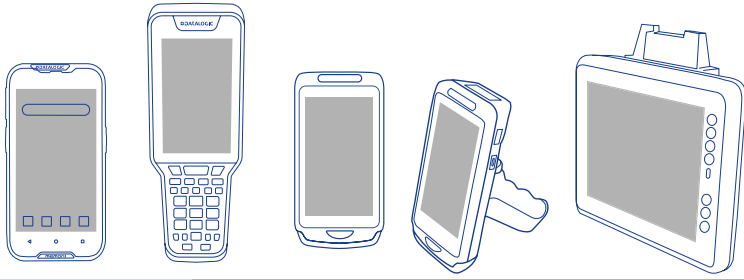
SoftSpot

Provide a draggable and configurable trigger button to enhance the user experience (UX) of any application

You can take advantage from our Datalogic SDK and APIs and empower your developers to create and integrate your applications in a safe and quick way. Finally, our Datalogic Shield allows customers to run your applications always on a secure and up-to-date device.



Open the QR code link to discover more about the Datalogic Mobility Suite



		<i>Joya Touch 22</i>	<i>Skorpio X5 Android</i>	<i>Memor 30-35 family</i>	<i>Memor 12-17 family</i>	<i>Memor 11</i>	<i>Rhino II</i>	<i>Blackline SH15/SH21</i>
PROTECTION	Datalogic Shield	X	X	X	X	X		
	Datalogic Launcher	X	X	X	X	X		
	Datalogic Enterprise Browser	X	X	X	X	X		
	Integrity Kit	X	X	X	X	X		
	DXU (DDU – Device Desktop Utility)						X	X
	42Gears SureLock		X					
42Gears SureFox		X						
CONFIGURE	Datalogic Scan2Deploy Studio	X	X	X	X	X		
	OEM Config	X	X	X	X	X		
	AE QR Code Enrollment	X	X	X	X	X		
	Datalogic DXU						X	X
DEVELOPMENT	Datalogic SDK (Java, Kotlin, Xamarin/MAUI, JavaScript)	X	X	X	X	X		
	Datalogic Visual Formatter	X	X	X	X	X		
	Datalogic Wedge	X	X	X	X	X		
OPTIMIZATION	Datalogic SoftSpot	X	X	X	X	X		
	Datalogic Logger	X	X	X	X	X		
	Datalogic WiFi Guard	X	X	X	X	X		
	Datalogic Battery Manager	X	X	X	X	X		
SW COMPATIBILITY HIGHLIGHT	Ivanti TE – Windows CE						X	X
	Ivanti Velocity – Android (WEB, TE)	X	X	X	X	X		
	Ivanti Velocity CE – Windows CE (WEB)						X	X
	Ivanti Wavelink® Avalanche™	X	X	X	X	X	X	X
	SOTI MobiControl	X	X	X	X	X	X	X
	StayLinked Smart TE	X	X	X	X	X	X	X
	42Gears SureMDM	X	X	X	X	X	X	X
	VMWare Work Space ONE	X	X	X	X	X		
	Any OEM Config Compliant UEM/EMM	X	X	X	X	X		
	Ivanti Speak Easy	X	X	X	X	X	X	X
Zello PTT	X	X	X	X	X	X	X	

Software & tools



DATALOGIC SHIELD™

Android™ security patches/updates for Datalogic mobile computers

Datalogic Shield is a new software service from Datalogic that delivers software security support and lifecycle management for mobile computers with Android™.

Included in the service are regular firmware updates with quarterly security patches, and incremental improvements for the device.

Under Datalogic Shield, the device will also benefit from Android major version upgrades*.

Datalogic Products Supported:

- Memor™ 30-30X / 35-35X
- Memor™ 12-17
- Memor™ 11
- Joya™ Touch 22
- Skorpion™ X5
- Memor™ 20
- Memor™ 10
- Joya Touch™ A6

Datalogic Shield: Subscription for predictable, recurring Android software updates:

- Includes at a minimal level quarterly security patches based on the Android Security Bulletins: <https://source.android.com/security/bulletin>
- Includes firmware fixes and enhancements
- Android major version (dessert) upgrades included
- Support for 2 years beyond the device's end of sale
- 12 month transition support for prior Android versions
- Automatic customer notifications of new updates

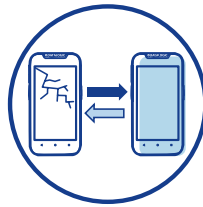
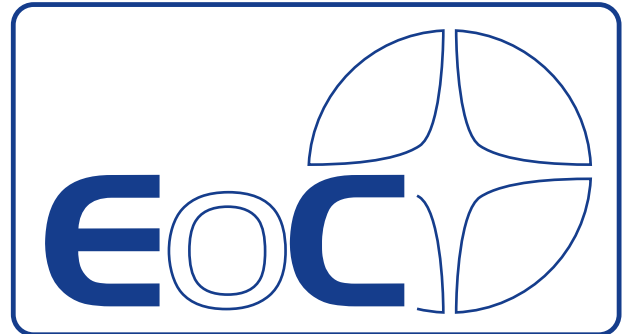
Datalogic Shield subscriptions are available as part of our service contracts:

- EASEOFCARE (EoC) contract
 - Datalogic Shield is included with Datalogic EoC maintenance contracts
- Datalogic Shield (software-only) contract
 - If a customer chooses not to purchase EoC, they can purchase a Datalogic Shield (software-only) contract

Service programs

Datalogic's EASEOFCARE Service Programs provide superior life-cycle support to ensure that products are always operating at peak performance.

Our market-leading Care programs are a key reason for customers to choose and keep Datalogic products, maximizing their uptime and lifecycle so that they can also be assured that their software is always running on a healthy and reliable device.



**FAST REPAIR TURNAROUND
(OVERNIGHT / 2 DAYS / 5 DAYS)**



**ACCIDENTAL DAMAGE
COVERAGE**



**BOTH WAYS FREIGHT
PAID BY DATALOGIC**



**3-5 YEARS CONTRACT
SERVICE OPTIONS**



© 2025 Datalogic S.p.A. and/or its affiliates. • All rights reserved. Without limiting the rights under copyright, no part of this documentation may be reproduced, stored in or introduced into a retrieval system, or transmitted in any form or by any means, or for any purpose, without the express written permission of Datalogic S.p.A. and/or its affiliates. • Datalogic and the Datalogic logo are registered trademarks of Datalogic S.p.A. in many countries, including the U.S. and the E.U. • Falcon, Joya logo and Lynx are trademarks of Datalogic S.p.A. and/or its affiliates, registered in many countries, including the U.S. and the E.U. • Memor, Rhino and Skorpio are trademarks of Datalogic S.r.l. and/or its affiliates. • SH15 Blackline and SH21 Blackline are trademarks of Soredi Touch Systems GmbH. • The Bluetooth word mark and logos are trademarks owned by Bluetooth SIG, Inc. and any use of such marks by Datalogic Group companies is under license. • Android is a trademark of Google LLC. • All other trademarks and brands are property of their respective owners. • Product specifications are subject to change without notice.
PG-MOBILE-COMPUTERS-EN Revision B 20250131

www.datalogic.com