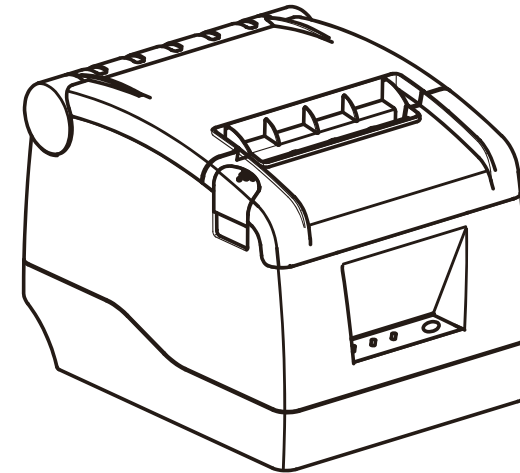


sewoo



MODEL : SLK-TS100

Receipt Printer User's Manual

sewoo

Aroot Co., Ltd.

28-6, Gajangsaneopdong-ro, Osan-si, Gyeonggi-do, 18103, Republic of Korea

TEL : +82-31-8077-5000 / FAX : +82-31-624-5310

<http://www.miniprinter.com>

Rev. Apr 2023

All specifications are subject to change without notice

This device complies with part 15 of the FCC Rules.

Operation is subject to the following two conditions.

- 1) This device may not cause harmful interference, and
- 2) This device must accept any interference received, including interference that may cause undesired operation.



Vic Barczyk

20280 S. Vermont Ave. STE 200, Torrance, CA 90502 | USA

+310-561-8030



Disposal of Old Electrical&Electronic Equipment(Applicable in the European Union and other European countries with separate collection systems)

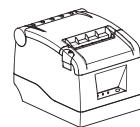
This symbol on the product or on its packaging indicates that this product shall not be treated as household waste.

Instead it shall be handed over to the applicable collection point for their recycling of electrical and electronics equipments. For more detailed information about recycling of this product, please contact your local city office, your household waste disposal service or the shop where you purchased the product.

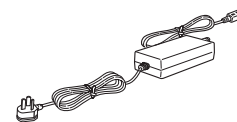
! Attention

- Do not use or store in locations subject to high temperature, humidity or pollution levels.
- Connect the power adapter into a properly grounded outlet. Do not share the same plug socket with electrical motors or other equipment which may cause the power supply voltage fluctuations.
- Avoid water or conductive materials like metal, from getting inside the printer. If this happens, immediately unplug the AC power cord.
- Do not attempt to print without paper.
- Unplug power supply from the printer if it will be unused for an extended period.
- Only use power adapter supplied with printer.
- Only use approved accessories.
- Never disassemble or modify the printer for repair or reconstruction.
- Be sure to use the original specified power source.
- High quality paper is recommended for best print quality and to extend the life of the printer.
- Be sure to turn the power switch to OFF before plugging and unplugging the power supply.
- Do not use this printer above 5,000 meters (16,000ft) above-sea-level in tropical climates or in high humidity conditions.

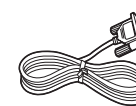
Unpacking



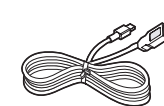
Printer



AC adapter, Power cord



Serial cable



USB cable



Quick manual



Roll paper



Disc
(Driver, User's manual)

Features

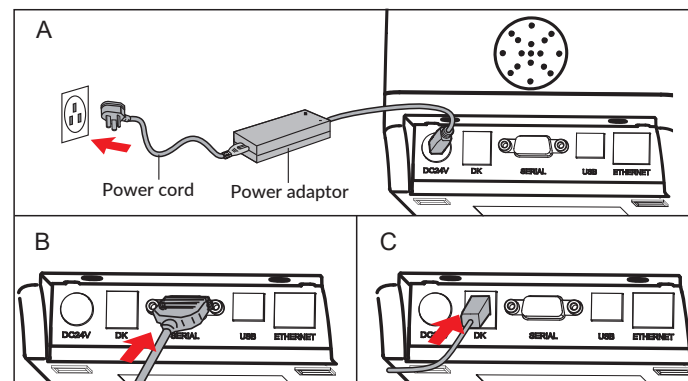
- Fast printing speed of up to 220mm/s.
- Large paper roll capacity: up to 120mm diameter.
- High speed text and graphic printing: Excellent printing quality and reliable performance even at maximum speed.
- Supports printer status monitoring function offering remote user visibility at any time.
- Printer "announces" when the receipt is being printed resulting in orders being expedited and processed more quickly.
- High speed download and logo printing mode.
- Supports Windows, plus Linux operating systems.
- Supports black mark detection for form printing.
- 256k Bytes NV Flash RAM for store and print of logo's.
- Standard with serial + USB + Ethernet interfaces.
- Supports network printing; perfect for kitchen applications.
- Mechanism life can reach to 100km and Auto cutter life with 100 million cuts.
- Supports 2D barcodes: QR Code & PDF417.
- Supports multiple international fonts (as options) .
- Chinese GB18030 code page as an option; Simplified/traditional Chinese are convertible.
- Built-in web page allows for setup of printer directly through IE port.
- 58MM/80MM paper roll can be optional.

Specifications

Model	SLK-TS100
Printing method	Direct thermal
Printing speed	220mm/s
Resolution	203dpi
Interface	USB+Serial+Ethernet
Paper width	79.5±0.5mm
Printable area	72mm(adjustable by commands)
Maximum paper diameter	Φ80 mm
Paper thickness	0.06~0.08mm
Column capacity	576 dots/line
Line space	3.75mm(Changeable by commands)
Commands	Compatible with ESC/POS
Drivers	Win 9X/Win 2000~2003/Win XP/Win 7~8/ Win 10/Linux
Bar code	UPC-A, UPC-E, JAN13(EAN13), JAN8(EAN8), CODE39, ITF, CODABAR, CODE93, CODE128, QR CODE, PDF417
Code page	PC437(Std.Europe)、(Katakana)\n\、PC850(Multilingual)、PC860(Portugal)、PC863(Canadian)、PC865(Nordic)、(West Europe)、(Greek)、(Hebrew)、PC866(Cyrillic#2)、PC852(Latin2)、(PC858)、(IranII)、(Latvian)、(Arabic)、(PT1511251)
Cutter	Partial
Cutter life	1.5 million cuts
Print head life	100 KM
Mechanism life	100 KM
Input buffer	64 Kbytes
NV Flash	256 Kbytes
Black mark	Support
Network monitoring	Support
Adaptor input voltage	AC110V/220V, 50~60Hz
Power supply	DC 24V/2.5A
Printer input voltage	DC 24V/2.5A
Cash drawer control	DC 24V/1A
Working environment	Temperature: 0~45°C, humidity: 10~80RH%
Storage environment	Temperature: -10~60°C, humidity: 10~90RH%
Dimension	185×142×136 mm (D×W×H)
Gross weight	1.025 kg

CONNECTING THE PRINTER

- Connect AC power cord to power, DC power cord to printer.
- Connect printer to computer or device.
- Connect cash drawer.

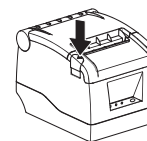


PAPER ROLL INSTALLATION

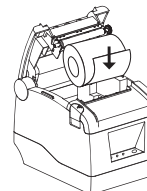
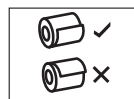
An 80mm wide thermal paper roll is recommended for 80mm series printers.

Follow the steps below to install the roll paper:

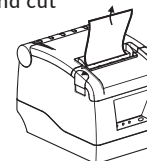
- Open the top cover by pressing the COVER OPEN button.



- Insert the roll paper per the following illustrations:



- Pull out a small amount of paper, and close the cover
- Printer will automatically feed the paper and cut



FUNCTION OVERVIEW: Get to know your printer

- POWER LED: Indicates when printer is powered on
- ERROR LED: ON or BLINKING indicates error condition (see Troubleshooting Chart below)
- PAPER LED: ON or BLINKING indicates error condition (see Troubleshooting Chart below)
- FEED button: Press to feed paper. Hold to feed paper continuously
- COVER OPEN button: Press to open the top cover, to insert paper roll

DRIVER INSTALLATION

Two methods to print receipts: 1) Printing directly through the port

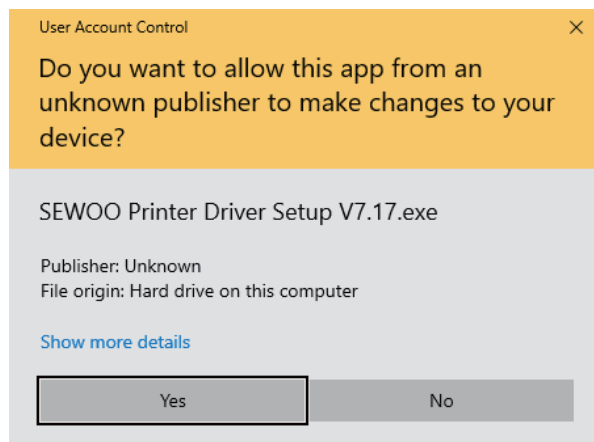
2) Using the printer driver.

1) Printing directly through the port

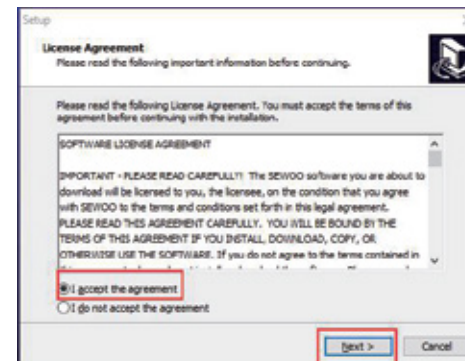
a. There is no need to install the printer driver. Just select the correct port (i.e., USB, LAN, Serial, Parallel) in the application software.

2) Install driver under WINDOWS OS (Steps as below):

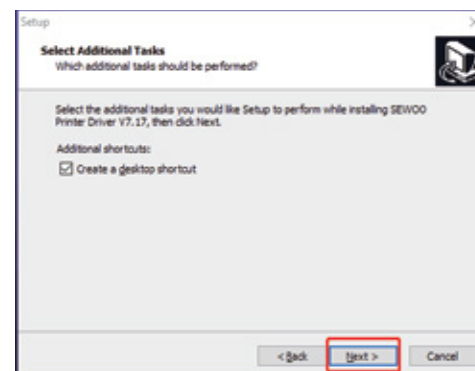
1. Double click  driver.



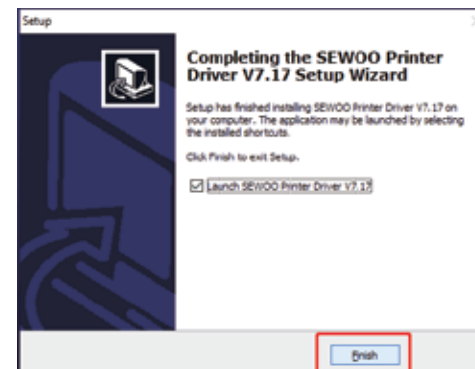
2. Select: "I accept the agreement"



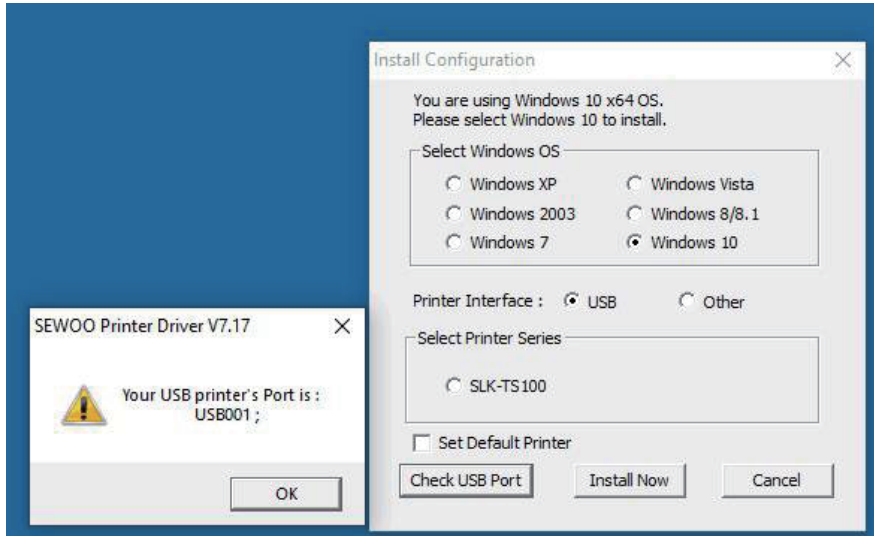
3. Create a shortcut on the desktop:



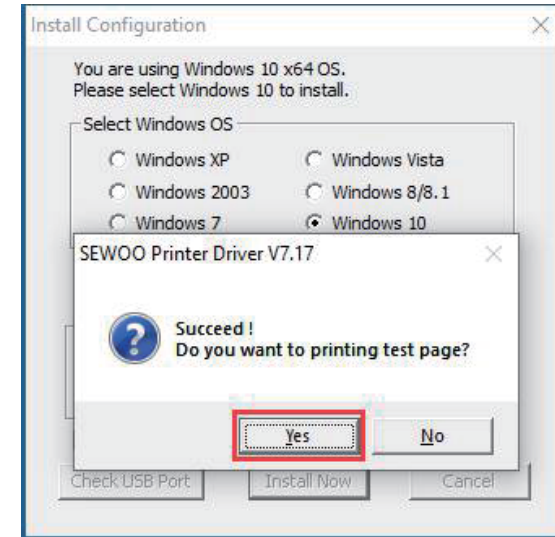
4. Setup Completed:



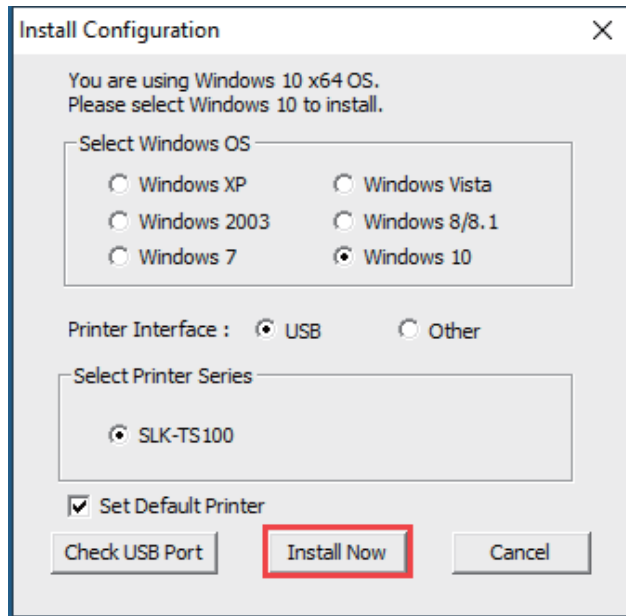
5. Select the correct interface port:



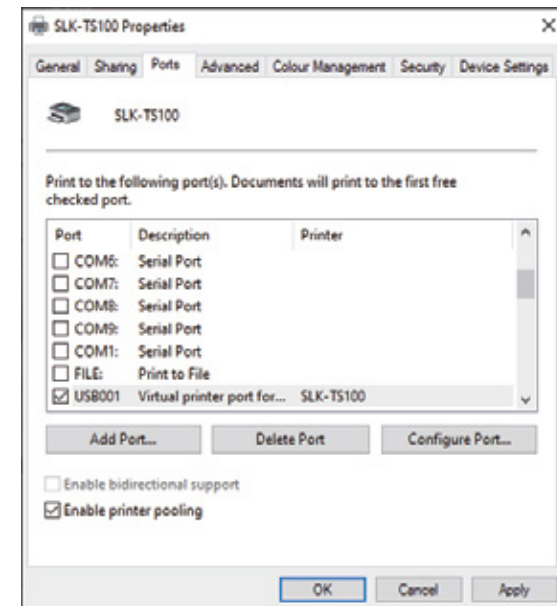
7. Click "Yes" to configure the port.



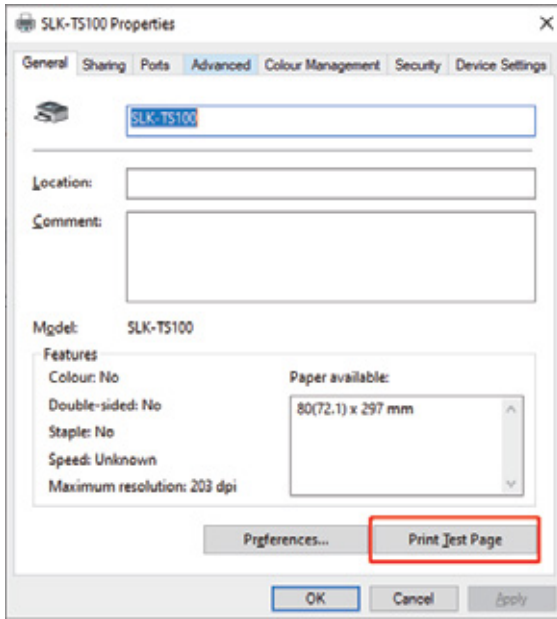
6. Select the proper printer series and click "Install Now"



8. Choose the detected USB001, click apply, shown as below:



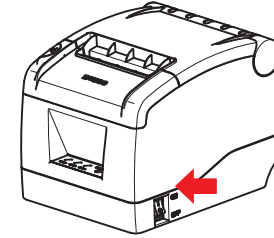
9. Select the "General" tab and then "Print Test Page":



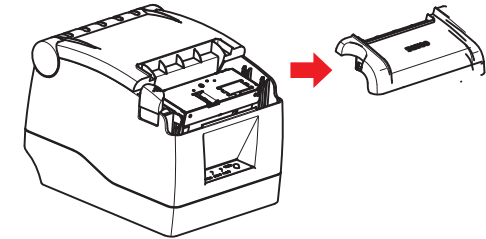
TROUBLESHOOTING GUIDE

- (1) Self-Test instructions:
Make sure the printer is connected to power and turned off. While pressing the FEED button, turn on the power. Release the FEED button after both the ERROR and PAPER LEDs blink twice. The printer will automatically print out a self-test which includes the printer's firmware version, status and configuration.
- (2) Config Mode
You can set serial communication speed, print density and melody type by using feed button. You can select an item by pressing feed button as many times as the number of the item you want to set.
- (3) How to enter hexadecimal mode
Make sure the printer is connected to power and turned off. While pressing the FEED button, turn on the power and keep it pressed, waiting for both the ERROR and PAPER LEDs to blink twice simultaneously, and then for the ERROR LED to stay on. At this point, release the FEED button and the printer will enter hexadecimal mode. Pressing the FEED button twice will cause the printer to print "Hexadecimal Dump" on the first line of the paper indicating that it is now in hexadecimal mode. To exit Hexadecimal Dump mode and return back into normal print mode, press the FEED button three times, or cycle the power.
- (4) Resetting to Factory (default) Settings
Make sure the printer is connected to power and turned off. While pressing the FEED button, turn on the power, waiting for both the ERROR and PAPER LEDs to blink twice simultaneously, then for the ERROR LED to turn on, and then for both the ERROR and PAPER LEDs to blink twice more. Release the FEED button when the buzzer alarms, confirming that the unit has been reset to factory default settings.

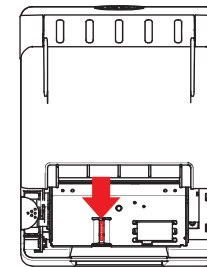
- (5) How to resolve cutter paper jams
 - Method 1 : Cycle the power to the unit.
 - Method 2 : A. Turn the printer off.



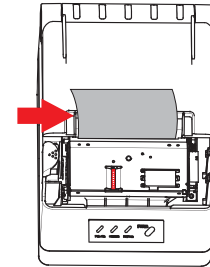
B. Open the top cover.



C. Turn the white gear on the cutter, and take jammed paper out.

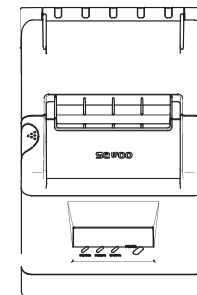
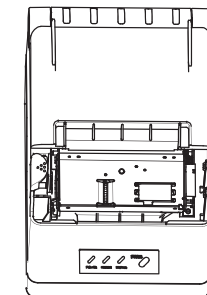


(1)



(2)

D. Only when the cutter is turned back to the initial (home) position, can the cover be opened.



LED TROUBLESHOOTING CHART

LED INDICATOR			OPERATING CONDITION	REMEDY
POWER	ERROR	PAPER		
OFF	OFF	OFF	Power off	1) Plug in AC adapter 2) Turn on power
ON	OFF	OFF	Normal mode Ready to print	None required
ON	OFF	BLINKING	Out of paper	1) Open Top Cover 2) Insert paper roll 3) Close Top Cover
ON	ON	ON	Top Cover open Out of paper	1) Insert paper roll 2) Close Top Cover
ON	BLINKING	ON	Paper Inserted Top Cover Open	1) Close Top Cover
ON	BLINKING	OFF	Cutter Jam	1) Cycle the power on the unit
ON	BLINKING	OFF	Thermal Head Overheated	1) Power down printer 2) Open Top Cover 3) Wait 10 min to cool down

CLEANING THE THERMAL PRINTHEAD and ROLLER

Clean the thermal printhead on a routine basis, or if one of the below conditions occurs:

- (1) Blurred printing.
- (2) "White" vertical streaks on printed receipt.
- (3) Noise during paper movement.

Follow these steps to clean the printhead and roller:

- (1) Power off the printer and open the roll paper cover. Remove the roll paper, if any.
- (2) If the thermal printhead is hot, wait for it to cool before cleaning.
- (3) Clean the elements of the thermal printhead with a printhead cleaning pen or cleaning swipe made specifically for thermal printhead, or with a cotton swab moistened with an alcohol (isopropyl alcohol) solvent.
- (4) Clean the rubber roller with the solvent
- (5) Wait till the solvent completely evaporates or dries before inserting the paper roll and closing the top cover. Print self-test page and repeat if necessary as it may take a few cleaning cycles to remove all debris from printhead. If problem persists, contact the party you had purchased the product from, to request service.

QR Code function

1. QR Code: Set unit size

[Command Code]

ASCII: GS (0 g n

Decimal: 29 40 107 48 103 n

Hex: 1D 28 6B 30 67 n

Function Description: Set the unit size of QR Code into "n"

Parameter Range: $1 \leq n \leq 16$

Default n = 3

Note: n = Unit width in dots = Unit height in dots

The ESC @ command setup failed when printer is powered off and reset.

2. QR Code: Set up error correction level

[Command Code]

ASCII: GS (0 i n

Decimal: 29 40 107 48 105 n

Hex: 1D 28 6B 30 69 n

Function Description: Set up QR Code error correcting grade,

The value for "n" is as below:

n	Level	Correct proportion (%)
48	Grade L	7
49	Grade M	15
50	Grade Q	25
51	Grade H	30

Parameter Range: $48 \leq n \leq 51$

Default: n = 48

Note: QR Code uses RS error correction algorithm and the command setting will reset when printer is reset or powered off.

QR Code: Data transmission to code cache

[Command Code]

ASCII: GS (0 nL nH d1...dk

Decimal: 29 40 107 48 103 nL nH d1...dk

Hex: 1D 28 6B 30 80 nL nH d1...dk

Function Description: Setting QR Code data transmission to code cache

Parameter Range: $4 \leq (nL + nH \times 256) \leq 2710$

$32 \leq d \leq 255$

Default: None

Note: After receiving, the data will be kept in the cache until next reset

K byte d1...dk be regarded as coded data

d1...dk must only contain data in the following table:

Characters	Including the below character in the table
Numeric	"0"~"9"
Alpha, Numeric and special characters	"0"~"9", "A"~"Z", SP, \$, %, *, +, -, ., \, ;
Chinese Character	GB18030-2000, Shift-JIS, JISX0208 standard
8 bits data	00H~FFH

The ESC @ command setup failed when printer is powered off and reset.

QR Code: Printing QR Code of code cache

[Command Code]

ASCII: GS (0 ?

Decimal: 29 40 107 48 129

Hex: 1D 28 6B 30 81

Function Description: Printing the encoded data in the code cache

Parameter Range: None

Default: None

Note: If the QR code size is outside printing area, the QR code will not be printed

If the code cache data is empty, the QR code will not be printed

USB port and Virtual Com Port exchange command set

[Command code]

ASCII: US ESC

Decimal: 31 27 31 184 19 20 N

Hex: 1F 1B 1F B8 13 14 N

Description: Select Real USB port or Virtual Com Port

Range: N=0 USB; N=1 Virtual Com Port.

To use this command, the printer must be connected as follows:

