

CT45, CT45 XP, CT40 & CT40 XP MOBILE COMPUTER

Includes the CT45, CT45 XP, CT40,
CT40 HC, CT40 DRH, CT40 XP,
CT40 XP DRH and CT40 XP HC

Accessories Guide

A woman with long brown hair, wearing a light blue button-down shirt and dark blue denim overalls with brown leather straps, is standing in a grocery store aisle. She is holding a green jar of jam in her left hand and a black Honeywell mobile computer in her right hand, looking down at the screen. The background is a blurred view of grocery store shelves stocked with various products.

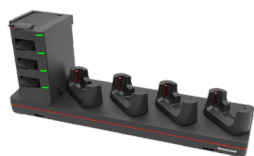
Honeywell

TABLE OF CONTENTS

3	Chargers
3	Booted Universal Docks for Charging CT45 and CT40 Product Family
6	Non-Booted Universal Docks for Charging CT45 and CT40 Product Family
8	Booted and Non-Booted Universal Docks for Healthcare
10	Mobile
12	Power Supply
13	Scan Handles
13	Soft Goods
14	Accessories
15	AC Line Cords

CHARGERS

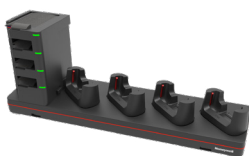
Booted Universal Docks for Charging CT45 and CT40 Product Family



CT45-5CB-UVB-BAT-0

Standard CT40/CT45 5 Bay Booted Charge Base

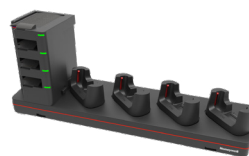
For charging up to 4pcs of CT45/CT40/CT45XP/CT40XP and 4pcs of CT40 batteries. Kit includes 5 bay universal dock, booted CT40 cup, CT40 battery cup, and power adapter. Power cord must be ordered separately.



CT45-5CB-UVB-BAT-1

CT40/CT45 5 Bay Booted Charge Base (U.S.)

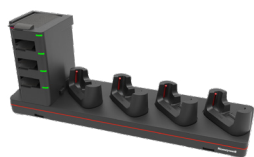
For charging up to 4pcs of CT45/CT40/CT45XP/CT40XP and 4pcs of CT40 batteries. Kit includes 5 bay universal dock, booted CT40 cup, CT40 battery cup, power adapter and US power cord.



CT45-5CB-UVB-BAT-2

CT40/CT45 5 Bay Booted Charge Base (EU)

For charging up to 4pcs of CT45/CT40/CT45XP/CT40XP and 4pcs of CT40 batteries. Kit includes 5 bay universal dock, booted CT40 cup, CT40 battery cup, power adapter and EU power cord.



CT45-5CB-UVB-BAT-3

CT40/CT45 5 Bay Booted Charge Base (UK)

For charging up to 4pcs of CT45/CT40/CT45XP/CT40XP and 4pcs of CT40 batteries. Kit includes 5 bay universal dock, booted CT40 cup, CT40 battery cup, power adapter and UK power cord.



CT45-5CB-UVB-0

Standard CT40/CT45 5 Bay Booted Charge Base with Terminal Cup Only

For charging up to 5pcs of CT45/CT40/CT45XP/CT40XP. Kit includes 5 bay universal dock, booted CT40 cup, power adapter. Power cord must be ordered separately.



CT45-5CB-UVB-1

CT40/CT45 5 Bay Booted Charge Base with Terminal Cup Only (U.S.)

For charging up to 5pcs of CT45/CT40/CT45XP/CT40XP. Kit includes 5 bay universal dock, booted CT40 cup, power adapter and US Power cord.



CT45-5CB-UVB-2

CT40/CT45 5 Bay Booted Charge Base with Terminal Cup Only (EU)

For charging up to 5pcs of CT45/CT40/CT45XP/CT40XP. Kit includes 5 bay universal dock, booted CT40 cup, power adapter and EU Power cord.



CT45-5CB-UVB-3

CT40/CT45 5 Bay Booted Charge Base with Terminal Cup Only (UK)

For charging up to 5pcs of CT45/CT40/CT45XP/CT40XP. Kit includes 5 bay universal dock, booted CT40 cup, power adapter and UK Power cord.



CT40-CB-UVB-0

Standard CT40 Booted Charge Base

For recharging up to four computers with protective boot (CT40-PB-00, CT40-PB-XP, or CT45-PB-XP). Kit includes 4-bay charger and power supply. Power cord must be ordered separately.



CT40-CB-UVB-1

CT40 Booted Charge Base (U.S.)

For recharging up to four computers with protective boot (CT40-PB-00, CT40-PB-XP, or CT45-PB-XP). Kit includes 4-bay charger, power supply and U.S. power cord.



CT40-CB-UVB-2

CT40 Booted Charge Base (EU)

For recharging up to four computers with protective boot (CT40-PB-00, CT40-PB-XP, or CT45-PB-XP). Kit includes 4-bay charger, power supply and EU power cord.



CT40-CB-UVB-3

CT40 Booted Charge Base (UK)

For recharging up to four computers with protective boot (CT40-PB-00, CT40-PB-XP, or CT45-PB-XP). Kit includes 4-bay charger, power supply and UK power cord.

CHARGERS, Continued

Booted Universal Docks for Charging CT45 and CT40 Product Family



CT40-NB-UVB-0

Standard CT40 Booted Net Base

For Ethernet communications and recharging up to four computers with protective boot (CT40-PB-00, CT40-PB-XP, or CT45-PB-XP). Kit includes net base and power supply. Power cord must be ordered separately.



CT40-NB-UVB-1

CT40 Booted Net Base (U.S.)

For Ethernet communications and recharging up to four computers with protective boot (CT40-PB-00, CT40-PB-XP, or CT45-PB-XP). Kit includes net base, power supply and U.S. power cord.



CT40-NB-UVB-2

CT40 Booted Net Base (EU)

For Ethernet communications and recharging up to four computers with protective boot (CT40-PB-00, CT40-PB-XP, or CT45-PB-XP). Kit includes net base, power supply and EU power cord.



CT40-NB-UVB-3

CT40 Booted Net Base (UK)

For Ethernet communications and recharging up to four computers with protective boot (CT40-PB-00, CT40-PB-XP, or CT45-PB-XP). Kit includes net base, power supply and UK power cord.



CT40-EB-UVB-0

Standard CT40 Booted Ethernet Base

For recharging computer with protective boot (CT40-PB-00, CT40-PB-XP, or CT45-PB-XP), battery and Ethernet communications. Kit includes Ethernet home base and power supply. Power cord must be ordered separately. Supports USB client via USB Type B connector.



CT40-EB-UVB-1

CT40 Booted Ethernet Base (U.S.)

For recharging computer with protective boot (CT40-PB-00, CT40-PB-XP, or CT45-PB-XP), battery and Ethernet communications. Kit includes Ethernet home base, power supply and U.S. power cord. Supports USB client via USB Type B connector.



CT40-EB-UVB-2

CT40 Booted Ethernet Base (EU)

For recharging computer with protective boot (CT40-PB-00, CT40-PB-XP, or CT45-PB-XP), battery and Ethernet communications. Kit includes Ethernet home base, power supply and EU power cord. Supports USB client via USB Type B connector.



CT40-EB-UVB-3

CT40 Booted Ethernet Base (UK)

For recharging computer with protective boot (CT40-PB-00, CT40-PB-XP, or CT45-PB-XP), battery and Ethernet communications. Kit includes Ethernet home base, power supply and UK power cord. Supports USB client via USB Type B connector.



CT40-HB-UVB-0

Standard CT40 Booted Home Base

For recharging computer with protective boot (CT40-PB-00, CT40-PB-XP, or CT45-PB-XP) and a spare battery. Kit includes home base and power supply. Power cord must be ordered separately. Supports USB client via USB Type B connector.

CHARGERS, Continued

Booted Universal Docks for Charging CT45 and CT40 Product Family



CT40-HB-UVB-1

CT40 Booted Home Base (U.S.)

For recharging computer with protective boot (CT40-PB-00, CT40-PB-XP, or CT45-PB-XP) and a spare battery. Kit includes home base, power supply and U.S. power cord. Supports USB client via USB Type B connector.



CT40-HB-UVB-2

CT40 Booted Home Base (EU)

For recharging computer with protective boot (CT40-PB-00, CT40-PB-XP, or CT45-PB-XP) and a spare battery. Kit includes home base, power supply and EU power cord. Supports USB client via USB Type B connector.



CT40-HB-UVB-3

CT40 Booted Home Base (UK)

For recharging computer with protective boot (CT40-PB-00, CT40-PB-XP, or CT45-PB-XP) and a spare battery. Kit includes home base, power supply and UK power cord. Supports USB client via USB Type B connector.



CT40-DB-UVB-0

Standard CT40 Booted Display Dock

For recharging computer with protective boot (CT40-PB-00, CT40-PB-XP, or CT45-PB-XP), connection with an external display, extending I/O for HDMI, Ethernet communications and three USB ports. Kit includes display base and power supply. Power cord must be ordered separately.



CT40-DB-UVB-1

CT40 Booted Display Dock (U.S.)

For recharging computer with protective boot (CT40-PB-00, CT40-PB-XP, or CT45-PB-XP), connection with an external display, extending I/O for HDMI, Ethernet communications and three USB ports. Kit includes display base, power supply and U.S. power cord.



CT40-DB-UVB-2

CT40 Booted Display Dock (EU)

For recharging computer with protective boot (CT40-PB-00, CT40-PB-XP, or CT45-PB-XP), connection with an external display, extending I/O for HDMI, Ethernet communications and three USB ports. Kit includes display base, power supply and EU power cord.



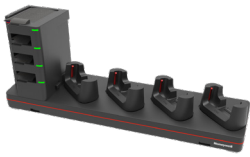
CT40-DB-UVB-3

CT40 Booted Display Dock (UK)

For recharging computer with protective boot (CT40-PB-00, CT40-PB-XP, or CT45-PB-XP), connection with an external display, extending I/O for HDMI, Ethernet communications and three USB ports. Kit includes display base, power supply and UK power cord.

CHARGERS, Continued

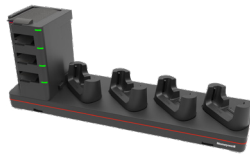
Non-Booted Universal Docks for Charging CT45 and CT40 Product Family



CT45-5CB-UVN-BAT-0

Standard CT40/CT45 5 Bay Non-booted Charge Base

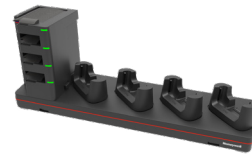
For charging up to 4pcs of CT45/CT40/CT45XP/CT40XP and 4pcs of CT40 batteries. Kit includes 5 bay universal dock, non-booted CT40 cup, CT40 battery cup, and power adapter. Power cord must be ordered separately.



CT45-5CB-UVN-BAT-1

CT40/CT45 5 Bay Non-booted Charge Base (U.S.)

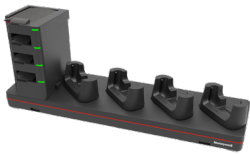
For charging up to 4pcs of CT45/CT40/CT45XP/CT40XP and 4pcs of CT40 batteries. Kit includes 5 bay universal dock, non-booted CT40 cup, CT40 battery cup, power adapter and US power cord.



CT45-5CB-UVN-BAT-2

CT40/CT45 5 Bay Non-booted Charge Base (EU)

For charging up to 4pcs of CT45/CT40/CT45XP/CT40XP and 4pcs of CT40 batteries. Kit includes 5 bay universal dock, non-booted CT40 cup, CT40 battery cup, power adapter and EU power cord.



CT45-5CB-UVN-BAT-3

CT40/CT45 5 Bay Non-booted Charge Base (UK)

For charging up to 4pcs of CT45/CT40/CT45XP/CT40XP and 4pcs of CT40 batteries. Kit includes 5 bay universal dock, non-booted CT40 cup, CT40 battery cup, power adapter and UK power cord.



CT45-5CB-UVN-0

Standard CT40/CT45 5 Bay Non-booted Charge Base with Terminal Cup Only

For charging up to 5pcs of CT45/CT40/CT45XP/CT40XP. Kit includes 5 bay universal dock, non-booted CT40 cup, power adapter. Power cord must be ordered separately.



CT45-5CB-UVN-1

CT40/CT45 5 Bay Non-booted Charge Base with Terminal Cup Only (U.S.)

For charging up to 5pcs of CT45/CT40/CT45XP/CT40XP. Kit includes 5 bay universal dock, non-booted CT40 cup, power adapter and US power cord.



CT45-5CB-UVN-2

CT40/CT45 5 Bay Non-booted Charge Base with Terminal Cup Only (EU)

For charging up to 5pcs of CT45/CT40/CT45XP/CT40XP. Kit includes 5 bay universal dock, non-booted CT40 cup, power adapter and EU power cord.



CT45-5CB-UVN-3

CT40/CT45 5 Bay Non-booted Charge Base with Terminal Cup Only (UK)

For charging up to 5pcs of CT45/CT40/CT45XP/CT40XP. Kit includes 5 bay universal dock, non-booted CT40 cup, power adapter and UK power cord.



CT40-CB-UVN-0

Standard CT40 Non-Booted Charge Base

For recharging up to four computers only. Kit includes 4-bay charger and power supply. Power cord must be ordered separately.



CT40-CB-UVN-1

CT40 Non-Booted Charge Base (U.S.)

For recharging up to four computers only. Kit includes 4-bay charger, power supply and U.S. power cord.



CT40-CB-UVN-2

CT40 Non-Booted Charge Base (EU)

For recharging up to four computers only. Kit includes 4-bay charger, power supply and EU power cord.



CT40-CB-UVN-3

CT40 Non-Booted Charge Base (UK)

For recharging up to four computers only. Kit includes 4-bay charger, power supply and UK power cord.

CHARGERS, Continued

Non-Booted Universal Docks for Charging CT45 and CT40 Product Family



CT40-NB-UVN-0

Standard CT40 Non-Booted Net Base

For Ethernet communications and recharging up to four computers (no boots). Kit includes net base and power supply. Power cord must be ordered separately.



CT40-NB-UVN-1

CT40 Non-Booted Net Base (U.S.)

For Ethernet communications and recharging up to four computers (no boots). Kit includes net base, power supply and U.S. power cord.



CT40-NB-UVN-2

CT40 Non-Booted Net Base (EU)

For Ethernet communications and recharging up to four computers (no boots). Kit includes net base, power supply and EU power cord.



CT40-NB-UVN-3

CT40 Non-Booted Net Base (UK)

For Ethernet communications and recharging up to four computers (no boots). Kit includes net base, power supply and UK power cord.



CT40-EB-UVN-0

Standard CT40 Non-Booted Ethernet Base

For recharging computer, battery and Ethernet communications. Kit includes Ethernet home base and power supply. Power cord must be ordered separately. Supports USB client via USB Type B connector.



CT40-EB-UVN-1

CT40 Non-Booted Ethernet Base (U.S.)

For recharging computer, battery and Ethernet communications. Kit includes Ethernet home base, power supply and U.S. power cord. Supports USB client via USB Type B connector.



CT40-EB-UVN-2

CT40 Non-Booted Ethernet Base (EU)

For recharging computer, battery and Ethernet communications. Kit includes Ethernet home base, power supply and EU power cord. Supports USB client via USB Type B connector.



CT40-EB-UVN-3

CT40 Non-Booted Ethernet Base (UK)

For recharging computer, battery and Ethernet communications. Kit includes Ethernet home base, power supply and UK power cord. Supports USB client via USB Type B connector.



CT40-HB-UVN-0

Standard CT40 Non-Booted Home Base

For recharging computer and one spare battery. Kit includes home base and power supply. Power cord must be ordered separately. Supports USB client via USB Type B connector.



CT40-HB-UVN-1

CT40 Non-Booted Home Base (U.S.)

For recharging computer and one spare battery. Kit includes home base, power supply and U.S. power cord. Supports USB client via USB Type B connector.



CT40-HB-UVN-2

CT40 Non-Booted Home Base (EU)

For recharging computer and one spare battery. Kit includes home base, power supply and EU power cord. Supports USB client via USB Type B connector.



CT40-HB-UVN-3

CT40 Non-Booted Home Base (UK)

For recharging computer and one spare battery. Kit includes home base, power supply and UK power cord. Supports USB client via USB Type B connector.

CHARGERS, Continued

Non-Booted Universal Docks for Charging CT45 and CT40 Product Family



CT40-DB-UVN-0

Standard CT40 Non-Booted Display Dock

For recharging computer, connection with an external display, extending I/O for HDMI, Ethernet communications and three USB ports. Kit includes display base and power supply. Power cord must be ordered separately.



CT40-DB-UVN-1

CT40 Non-Booted Display Dock (U.S.)

For recharging computer, connection with an external display, extending I/O for HDMI, Ethernet communications and three USB ports. Kit includes display base, power supply, and U.S. power cord.



CT40-DB-UVN-2

CT40 Non-Booted Display Dock (EU)

For recharging computer, connection with an external display, extending I/O for HDMI, Ethernet communications and three USB ports. Kit includes display base, power supply, and EU power cord.

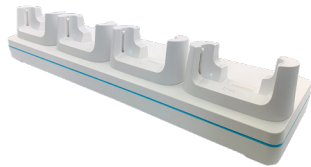


CT40-DB-UVN-3

CT40 Non-Booted Display Dock (UK)

For recharging computer, connection with an external display, extending I/O for HDMI, Ethernet communications and three USB ports. Kit includes display base, power supply, and UK power cord.

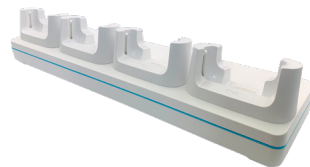
Booted and Non-Booted Universal Docks for Healthcare



CT40-NB-UVB-HCO

Standard CT40 Non-Booted HC Display Dock

For charging the computer, connection with an external display, extending I/O for HDMI, Ethernet communications and three USB ports. Kit includes HC display base and power supply. Power cord must be ordered separately.



CT40-NB-UVN-HCO

Standard CT40 Non-Booted HC Net Base

For Ethernet communications and recharging up to four computers. Kit includes 4-bay HC net base and power supply. Power cord must be ordered separately.



CT40-DB-UVB-HCO

Standard CT40 Booted HC Display Dock

For charging a computer with protection boot, connection with an external display, extending I/O for HDMI, Ethernet communications and three USB ports. Kit includes HC display base and power supply. Power cord must be ordered separately.



CT40-DB-UVN-HCO

Standard CT40 Non-Booted HC Display Dock

For charging the computer, connection with an external display, extending I/O for HDMI, Ethernet communications and three USB ports. Kit includes HC display base and power supply. Power cord must be ordered separately.

CHARGERS, Continued

Battery Version



CT40-QBC-0

Standard QBC

For recharging up to four batteries. Kit includes dock and power supply. Power cord must be ordered separately.



CT40-QBC-1

QBC (U.S.)

For recharging up to four batteries. Kit includes dock, power supply and U.S. power cord.



CT40-QBC-2

QBC (EU)

For recharging up to four batteries. Kit includes dock, power supply and EU power cord.



CT40-QBC-3

QBC (UK)

For recharging up to four batteries. Kit includes dock, power supply and UK power cord.



CT4X-QBC-1BAY-0

Standard QBC

For charging up to four batteries. Kit includes dock and power supply. Power cord must be ordered separately.



CT4X-QBC-1BAY-1

Standard QBC (U.S.)

For charging up to four batteries. Kit includes dock, power supply and U.S. power cord.



CCT4X-QBC-1BAY-2

Standard QBC (EU)

For charging up to four batteries. Kit includes dock, power supply and EU power cord.

MOBILE



CT45-SN-CNV

CT45 Booted and Non-Booted Snap-On Adapter

Charge CT40, CT40 XP, CT45, CT45 XP with or without protective boot. Provides tethered USB client connectivity. Compatible with hand strap, battery pack and scan handle. Charges mobile computer battery in three hours. Kit includes snap-on adapter with convertible adapter. Optional 50130570-001 (5 V, 2 A) USB power wall adapter sold separately. Remove convertible adapter to charge CT40, CT40 XP, CT45, and CT45 XP with protective boot.



CT45-VD-CNV

CT45 Booted and Non-Booted Vehicle Dock

For charging CT40, CT40XP, CT45 and CT45 XP with or without protective boot. compatible with hand strap. NFC tag integrated for seamless pairing with mobile computer. Kit includes vehicle dock with convertible adapter. Remove convertible adapter to accommodate with CT40, CT45, CT40 XP and CT45 XP with protective boot.



CT45-VD-CNV-SPK

CT45 Booted and Non-Booted Vehicle Dock with Extended Speaker

For charging CT40, CT40XP, CT45 and CT45 XP with or without protective boot. NFC tag integrated for seamless pairing with mobile computer. Kit includes vehicle dock with convertible adapter. Remove convertible adapter to accommodate with CT40, CT45, CT40 XP and CT45 XP with protective boot.



50138169-001

Cigarette Lighter Power Adapter Cable

Cigarette lighter power adapter, 1.8 mm (0.07 in).



805-638-001

RAM Mount

Required for vehicle dock or vehicle holder. Consists of one 12.07 cm (4.75 in) adjustable pivot arm with two 3.8 cm (1.5 in) stainless steel balls and assembly hardware. Requires customer-supplied hardware to secure mount to vehicle.



CT40-HDST-35MM

PTT Headset

Enterprise headset with PTT function, 3.5 mm (0.14 in), 1.8 m (5.9 ft) length.



CT40-CVT-25MM

Audio Cable

3.5 mm (0.14 in) plug to 2.5 mm (.1 in) socket adapter wire.



CT45-VH-SH

Vehicle Holder

For holding the CT40/CT45/CT47 firmly on a vehicle working environment. Compatible with booted or non-booted scan handles.



CT40-UCP-B

CT40 Booted Universal Cup

For one computer with protective boot. Dock, power supply and cables must be ordered separately.



CT40-UCP-N

CT40 Non-Booted Universal Cup

For one computer (no protective boot). Dock, power supply and cables must be ordered separately.



CT40-UCP-BHC

CT40 HC Booted Universal Cup

For one CT40 HC with protective boot. Dock, power supply and cables must be ordered separately.



CT40-UCP-NHC

CT40 HC Non-Booted Universal Cup

For one CT40 HC (no protective boot). Dock, power supply and cables must be ordered separately.



CT45-SN-IST

CT45-SN-IST

CT45 convertible adapter on CT45 Snap-on adapter. A plastic insert can be used with CT40-SN-CNV to accommodate CT45 product family.



CT45-VD-IST

CT45-VD-IST

CT45 convertible adapter on CT45 Vehicle docks. A plastic insert can be used with CT40-VD-CNV to accommodate CT45 product family.



CT45-BAT-CUP

CT40/CT45 Battery Cup

CT40/CT45 battery cup.
Used along with CT45 5 bay charger.

POWER SUPPLY



318-055-011

Spare Battery Pack

CT40 battery pack, 4020 mAh, for use with CT40 configurations with plastic battery latch button (last two digits in part number begin with 0: CT40-L*N-xxxx0x). Cannot be used on CT45 product family.



318-055-067

Spare Battery Pack

CT40 and CT45 product family battery pack (replacing 318-055-015), 4020 mAh, for use with CT45, CT45 XP, CT40 and CT40 XP configurations with metal battery latch button.



318-055-H67

Spare Battery Pack

CT40 HC and CT40 XP HC battery pack (replacing 318-055-017), 4020 mAh, for use with CT40 HC and CT40XP HC.



318-055-D67

Spare Battery Pack

CT40 disinfectant ready battery pack, 4020 mAh, for use with CT40 disinfectant-ready configurations.



50121666-001

Desktop Power Supply

36 W power supply for use with Ethernet home base, charge-only home base and quad battery charger. Requires country-specific line cord to be ordered separately.



50121667-001

Quad Base Power Supply

84 W power supply for use with four-bay charging base and four-bay net base. Requires country-specific line cord to be ordered separately.



50130570-001

Power Plug Adapter Kit

USB power adapter (5 V, 2 A) kit for snap-on adapter. Includes EU, UK, U.S. and IN plugs.

CBL-500-120-S00-05

USB Cable

Charging and USB communication cable, USB Type A to Type C, 1.2 m (3.9 ft).



CT45-CIGR-1

Cigarette Lighter Adapter

Charging CT45, CT45XP, CT40 and CT40XP configurations on vehicle. Quick Charge 3.0 compliant. Requires CT45 USB adapter or USB cable to be ordered separately.

SCAN HANDLES



CT40-SH-DC

Scan Handle, Compatible with Charging Dock

Snaps easily on or off the CT40 and CT40 XP mobile computers. Compatible with charging docks, hand strap and snap-on adapter.



CT40-SH-PB

Scan Handle and TPU Boot

Kit includes CT40 scan handle and TPU boot. Compatible with all booted charging docks.



CT45-SH-UVN

CT45 Scan Handle, Non-Booted

Snaps easily on or off the CT45 and CT45 XP. Compatible with charging docks, hand strap and snap-on adapter, rear camera is exposed.



CT45-SH-UVB

CT45 Scan Handle, Booted

Snaps easily on or off the CT45 and CT45 XP with protective boot. Compatible with charging docks and snap-on adapter with no insert. Kit includes CT45 scan handle and TPU boot.

IH40-BK-45

Non-booted IH40 Bracket

Snaps easily on or off the CT45 and CT45 XP. Used along with IH40 RFID pistol grip.

IH40-BK-45PB

Booted IH40 Bracket

Snaps easily on or off the CT45 and CT45 with protective boot. Used along with IH40 RFID pistol grip.

SOFT GOODS



825-238-001

Holster

Holster suitable for use with CT40, CT50 and CT60.



CT40-PB-XP

CT40 Hard Protective Boot

CT40 and CT40 XP protective boot (replacing CT40-PB-00). For use with CT40 booted accessories, including charging docks, display dock, booted scan handle and wearables.

CT45-PB-XP

CT45 Hard Protective Boot

CT45 and CT45 XP protective boot. Enhanced protection with overmolded housing. For use with CT45 booted accessories, including charging docks, display dock, booted scan handle and wearables.



825-237-001

Pouch

Pouch suitable for use with CT40, CT50 and CT60.



CT40-STL-1PKC

CT45/CT45XP/CT40/CT40XP stylus

CT45/CT45XP/CT40/CT40XP stylus, worked with terminal with or without screen protector.

ACCESSORIES



CT40-HS-3PKC

CT45/CT40 Hand Strap

Hand straps compatible with CT40, CT45 product family, 3 pcs/one pack.



CT45-HS-FM

CT45/CT40 Adjustable Hand Strap

Hand strap compatible with CT40, CT45 and CT47, adjustable to fit operations with or without glove, 3 pcs/one pack.



CT45-SP-1PK

CT45/CT40 Screen Protector

CT45/CT40 self adhesive, tempered glass screen protector, black frame.

CT40-QL-00

Quad Lock Case

Quad lock case to mount CT40 on Zebra RFD8500 RFID sled with quad lock.

856-065-004

Industrial-Grade Micro-SD Card

Micro-SD card, 1 GB, AFIGUDI, RoHS

Note: Micro-SD cards are required when databases are stored on the device. The database should be stored on the SD card.

856-065-005

Industrial-Grade Micro-SD Card

Micro-SD card, 2 GB, AFIGUDI, RoHS

Note: Micro-SD cards are required when databases are stored on the device. The database should be stored on the SD card.

856-065-006

Industrial-Grade Micro-SD Card

Micro-SD card, 4 GB, AFIGUDI, RoHS

Note: Micro-SD cards are required when databases are stored on the device. The database should be stored on the SD card.

856-065-007

Industrial-Grade Micro-SD Card

Micro-SD card, 8 GB, AFIGUDI, RoHS

Note: Micro-SD cards are required when databases are stored on the device. The database should be stored on the SD card.

AC LINE CORDS

50127245-001	50117501-001	50117503-001
Power Cord (India) Power cord, India, 1.5 m (4.9 ft).	Power Cord (Australia) Power cord, Australia, 2.5 m (8.2 ft).	Power Cord (CB) Power cord, Argentina, Isled CB.
77900506E	77900507E	77900508E
Power Cord (U.S.) Power cord, United States, IEC320-C13, 1.85 m (6.07 ft).	Power Cord (UK) Power cord, United Kingdom, IEC320-C13, 2.5 m (8.2 ft).	Power Cord (EU) Power cord, Europe, IEC320-C13, 2.5 m (8.2 ft).
19-19807	19-19726	3007-4681-001
Power Cord (China) Cable, China cord set (CCC), 2.5 m (8.2 ft).	Power Cord (U.S.) Cable, power cord/IEC, U.S., 2.5 m (8.2 ft).	5 Bay Power Cord (U.S.) 5 Bay Chargers' power cable, C5 type, US
3007-4683-001	3007-4682-001	3007-4684-001
5 Bay Power Cord (EU) 5 Bay Chargers' power cable, C5 type, EU	5 Bay Power Cord (UK) 5 Bay Chargers' power cable, C5 type, UK	5 Bay Power Cord (ANZ) 5 Bay Chargers' power cable, C5 type, ANZ

For more information

sps.honeywell.com

**Honeywell Safety and
Productivity Solutions**

855 S Mint St
Charlotte, NC 28202
800-582-4263
www.honeywell.com

CT45 and CT40 Product Family Accessories Guide LTR | Rev F | 08/23
©2023 Honeywell International Inc.

Honeywell